

 500 ml dispenser with sensor for hand sanitiser - liquid or gel. Batteries not incl. For indoor use. Can be mounted on e.g. the Multi Stand or a wall.

 500 ml Spender mit Sensor für Hand Alkohol - flüssig oder Gel. Batterien nicht inkl. Für den Innenbereich. Kann zum Beispiel auf den Multi Stand oder ein Wand montiert werden.

 500 ml dispenser med sensor til hånd-sprit - flydende eller gel. Batterier er ikke inkl. Til indendørs brug. Kan monteres på f.eks. en Multi Stand eller en væg.



NEW

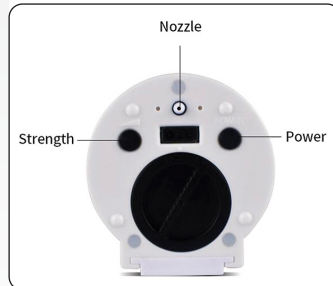


Can be ordered incl. stand and snap-frame.

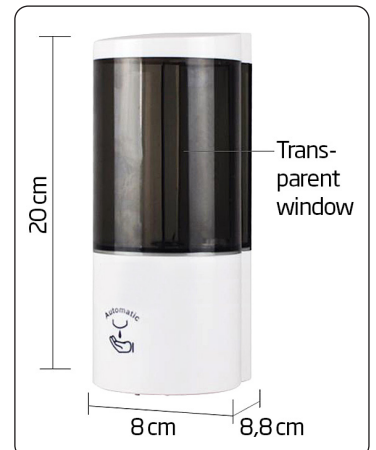
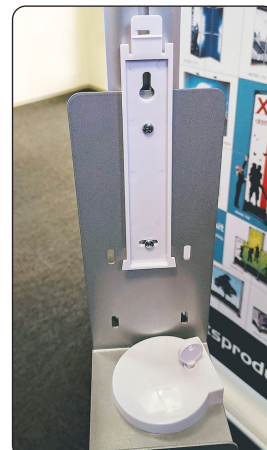
Model 852

Art. 1905 with snap-frame for A4 poster

Art. 1906 with snap-frame for A3 poster



Powered by 4 pcs. of AA batteries (not incl.)



Model	Article	Size W x H x D	Colour	Batteries	Package size and weight	Pallet size and quantity
608	1901	8 x 20 x 8,8 cm	White	4 pcs. of AA (not incl.)		

Switch on/off setting

1. After the batteries installed, press POWER to turn on, the power indicator in the sensing window flashes 3 times in blue and the inside buzzer sounds 3 times at the same time, that mean the machine is standby.
2. While the cylinder needs to be shut down, no matter whether the liquid output is shift 1st, 2nd or 3rd, just press POWER button once.

Liquid output volume setting

1. Press the liquid volume adjustment button "▲" one times, the power indicator in the sensing window flashes once in blue, the inside buzzer beeps once at the same time indicating that the liquid volume is level 1.
2. Press the liquid volume adjustment button "▲" two times, the power indicator in the sensing window flashes twice in blue, the inside buzzer beeps twice at the same time indicating that the liquid volume is level 2.
3. Press the liquid volume adjustment button "▲" three times, the power indicator in the sensing window flashes three in blue, the inside buzzer beeps three at the same time indicating that the liquid volume is level 3.
4. Press the liquid volume adjustment button "▲" again, the power indicator in the sensing window flashes once in blue, the inside buzzer beeps once at the same time indicating that the liquid volume is back to level 1.
5. The liquid output is designed a memory function, if the last liquid output is set to X (such as the level 2), since the battery is renew and turned back on, the liquid output will default to the last level (ie, the level 2).

Notice

1. Please ensure that the soap is clean and free of particulate matter or floccules and sediments. (Note: Due to the difference in soap concentration, too thick or too sticky soap may cause the pump silt up. In this case, the original soap solution can be diluted by adding water, and then the liquid can be discharged after multiple try. If still not, please replace other soaps.)
2. Since the dispenser is new one or refill the liquid, normally the liquid can discharged after multiple try to let the air out from the pump.
3. After the soap dispenser is filled into the soap, it should be used frequently. If it is not used for a long time, the soap liquid should be poured out first, then the water is sensed until the soap liquid inside the soap dispenser is completely discharged. Otherwise, the soap liquid may cause solidification due to natural air drying which will affect the working life. And please remove the batteries as well.
4. Please refill the soap liquid until the rest around 1cm in the cylinder.
5. The soap dispenser is designed a low battery alert. When there is no obstruction in the sensing range, but the buzzer beeps, it means the battery is about to run out, please replace the battery.
6. Do not use strong corrosive chemical solvents to clean the dispenser, so as to avoid surface damage and deformation.
7. Do not expose the dispenser to moisture or water, as this may directly damage it.

Sensory soap dispenser

User manual



- Please read this manual in details before installation
- Please keep this manual and read in necessities

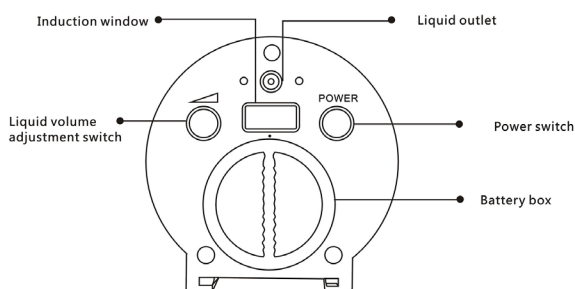
Product list

1 set dispenser, 1 bag screw accessories, 1 set user manual

Specification

Description	Sensory soap dispenser
Dimension	L85xW89xH205mm
Sensory type	Infrared ray
Sensory distance	10(±2) cm
Capacity	500ml
Liquid Output	Level 1: approx. 0.5ml/drop depend on the liquid density Level 2: approx. 1.0ml/drop depend on the liquid density Level 3: approx. 1.5ml/drop depend on the liquid density
Power supply	DC 6V (4pcs x AA Alkaline battery)
Power consumption	Standby : ≤0.5mW ; Working : ≤2W
Battery life	approx 30000 drops each 4pcs new alkaline battery
Low-battery alert	the inside buzzer will alert since the power is lower than 4.5v
Materials	PC/ABS

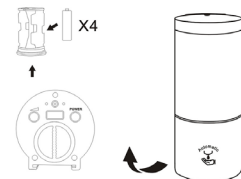
Dispenser bottom sketch



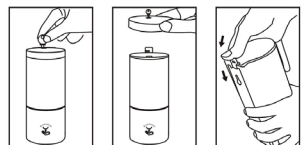
Installation Notes

1. The position of the soap dispenser should be installed where ensure the sunlight cannot be directly irradiated on the product. And the space below the dispenser should be more than 40cm, otherwise it may cause the product to unworkable.

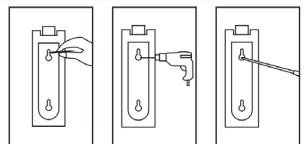
2. Open the battery cover counterclockwise to align it with the dot on the panel, remove the battery compartment, and place 4pcs AA 1.5V battery as per the positive and negative electrode sign into the battery compartment.



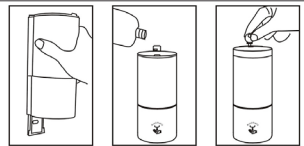
3. Open the lock on the cap with the key provided counterclockwise and remove the cap. Push the cylinder outward from the mounting plate and slide it out.



4. Using the mounting plate as a template, mark the drilling position on the wall with a pen and drill with 6mm hole at the position. Then put the plastic plug into the hole and screw the mounting plate to the wall.



5. Install the cycliner on the mounting plate as per the arrow direction, pour the required liquid, cover the cap and lock it.



6. Press POWER to turn on, the power indicator in the sensing window flashes 3 times in blue and the inside buzzer sounds 3 times at the same time, that mean the machine is standby. (Note: please touch the sensing window the several times while using the dispenser in the frist times to let the air from the pump out.)

